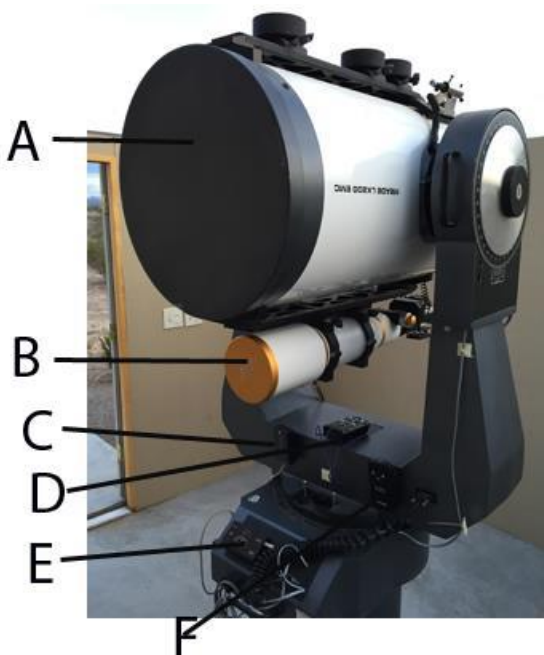


Leasburg Observatory Quick Start Guide

- 1) Remove the 4 turnbuckles from the roof and leave them hanging on the wall
- 2) Open the roof with the yellow hand pad. It will stop when fully open
- 3) Take the cover off the 16" scope, the eyepiece and the finder.

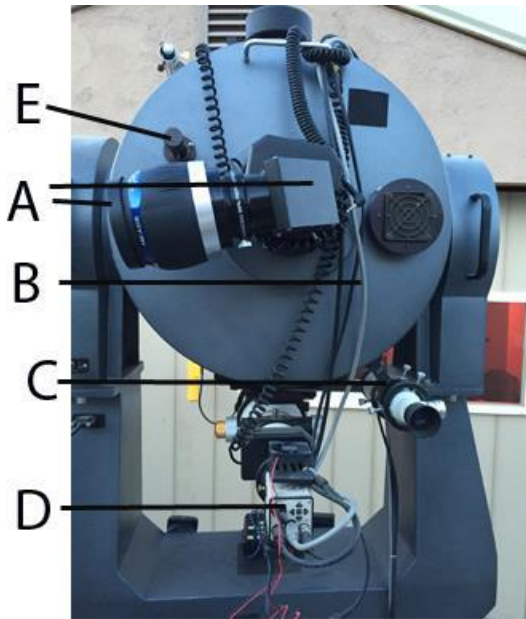
Front view of parked telescope:



Front view of parked telescope. A and B are the 16" Meade (referred to as 'the 16') and 110 WO refractor. C is the MallinCam focuser. D is the wireless handpad controlling the mount and moves the telescope. I routinely leave this on the fork mount at the end of the night because I am easily reminded of its location when setting up! E is the wireless receiver (see below). F is the fine focuser for the 16 which I don't usually use. I've become very comfortable with fine tuning the main focus knob on the mirror

All you need to worry about are the covers mentioned above, to remove those, and the wireless handpad which you will be using

Rear view of scope:



Rear view of parked telescope. A is the eyepiece and diagonal. The diagonal can be rotated to facilitate viewing depending on the scope position by loosening thumb screws on the side. B are the data cables that run around the scope and through the mount. THESE ARE THE CABLES YOU NEED TO MONITOR CAREFULLY DURING TELESCOPE SLEWING (i.e. moving to different areas of the sky) C is the finder scope. D is the Mallincam video camera. E is the main focuser for the 16

All you need to know about are the main focuser knob, cables as mentioned, to watch those when the telescope slews, eyepiece and finder.

4) Turn on the mount power. Just flip the toggle switch

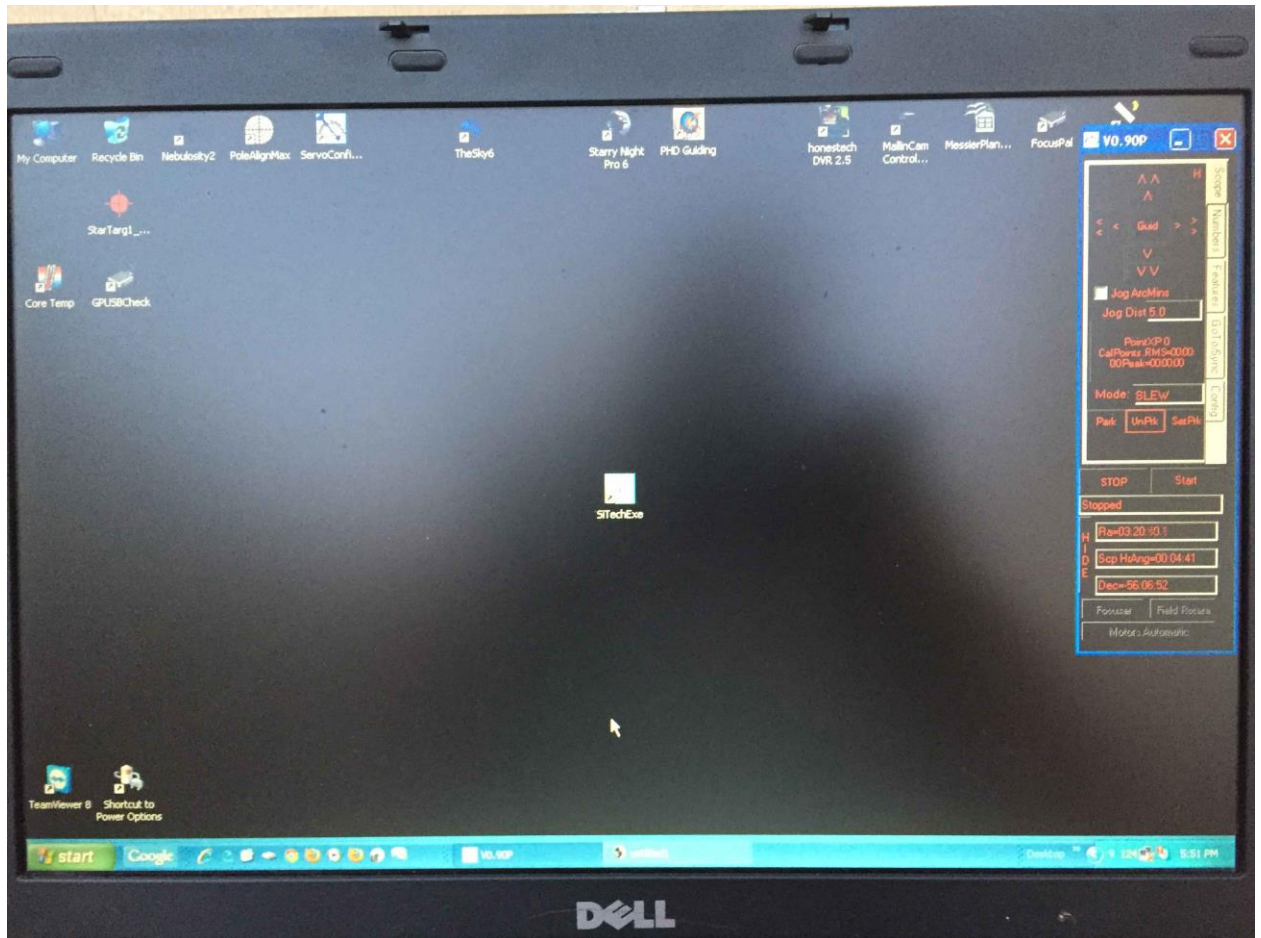


up

5) The mount is already connected to the laptop. Just open the laptop and turn it on. Make sure the time in the lower right side is accurate. If not you will have to change it.

6) Open the Sitech application in the center of the screen. When you double-click on that the Sitech

control panel pops up to the right.



7) In the panel click on the “scope” tab and then click on the unpark button – see below

Scope Numbers Features GoTo&sync Config

^^ H
^

< < Guid > >
< >

V
V V

Jog ArcMins

Jog Dist 5.0

PointXP 0
CalPoints.RMS=00.00:
00Peak=00.0000

Mode: SLEW

Park UnPrk SetPrk



STOP Start

Stopped

H
I
D
E

Ra=03:21:03.9

Scp HrAng=00:04:41

Dec=-56:06:52

Focuser Field Rotate

Motors Automatic

8) Unpark the telescope: For that you will need the



handpad.

The wireless receiver is on the front panel of the mount. There are 4 lights. The arrow points to the “receive” light which will light up every time you press the SPD button. One of the other lights will also light up. There are 3: guide, pan and slew. As you keep pressing the SPD button the lights will “cycle” from left to right. You need to stop pressing SPD when the red SLEW light is on at the far right. It almost always is on that already but if you press directional buttons on the handpad and nothing happens, that could be why.

To start the unparking process, press the down arrow until the scope is pointing straight down . You have to press firmly or it may stall. Don’t worry just keep going until it stops in the fully down position. Then you have to press the up arrow button until the

scope is pointing at least horizontal. Then it is

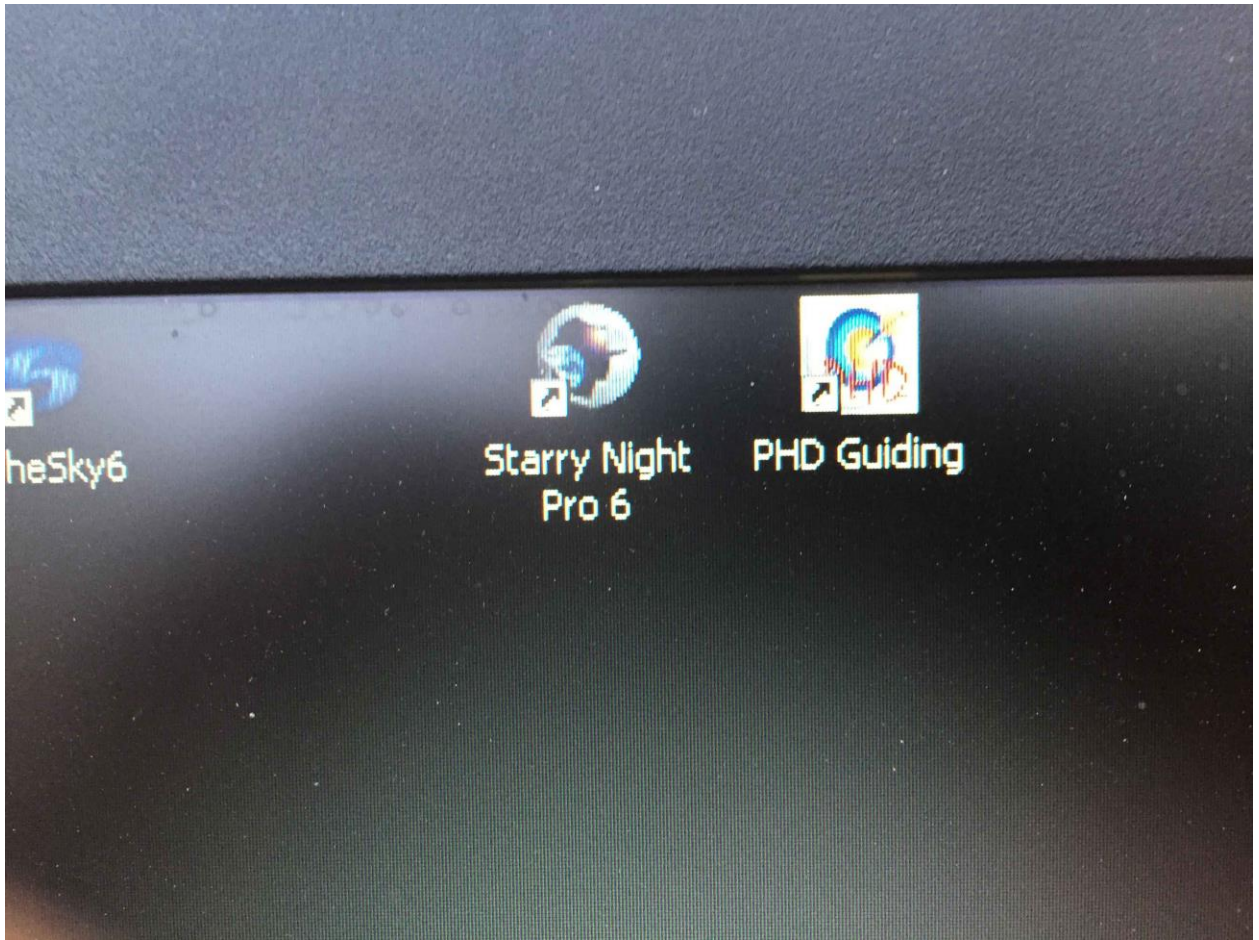


unparked as shown in this image.



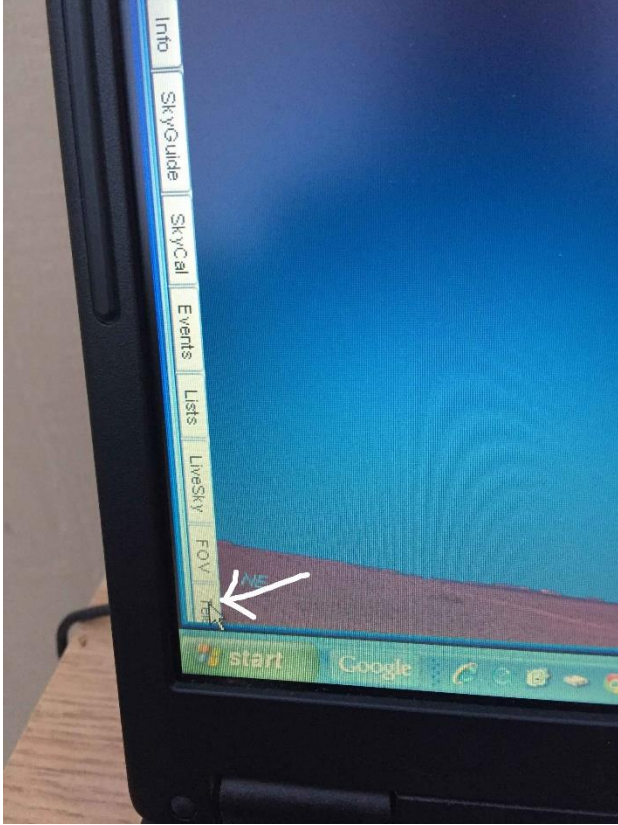
Note this is the fine focus controller to the left for the 16 which you do not need to use if you don't want to. I have learned how to focus with the main focus knob only. But, make sure the cord to the controller is not connected while unparking the scope.

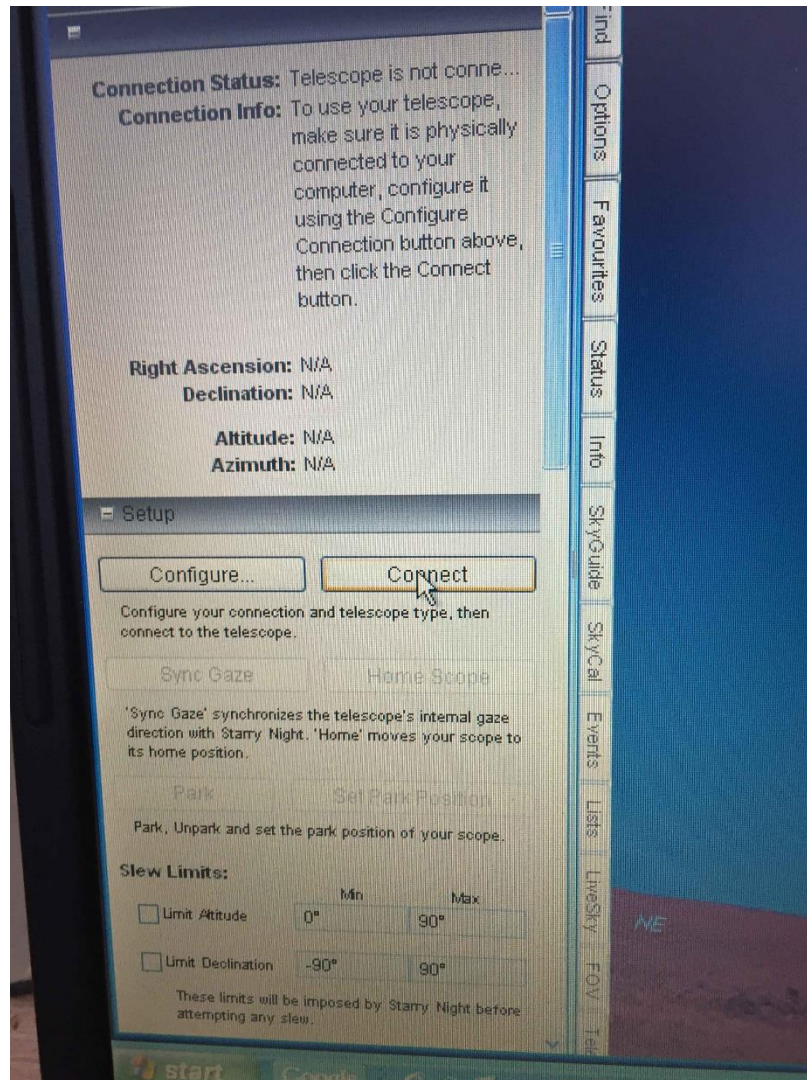
9) Go back to the laptop and open Starry Night program at the top of the screen



10) At the extreme lower left shown below once the program is open, click on the telescope tab which is

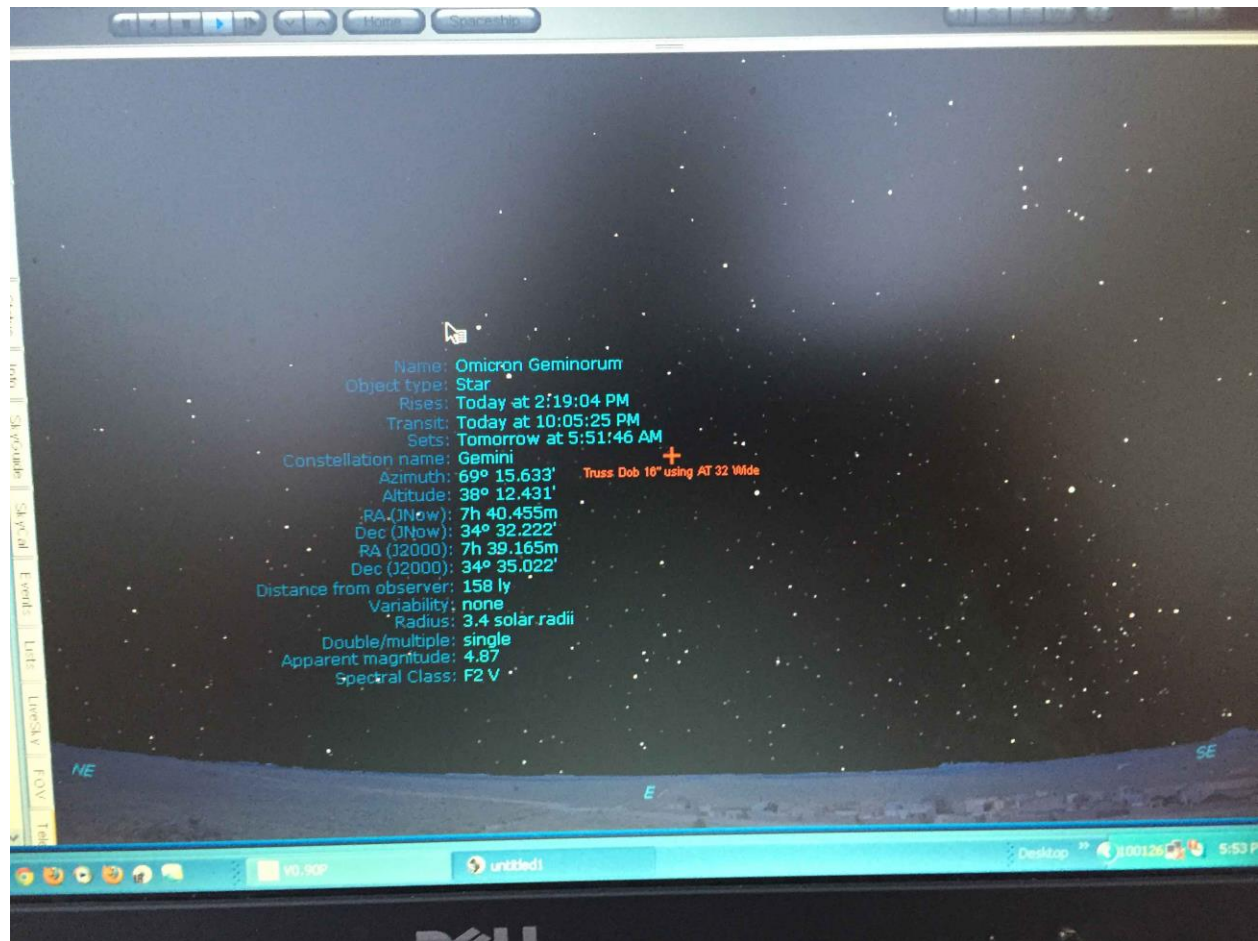
barely seen on the laptop screen (white arrow)





11)

Click on connect button in the setup screen once it comes up

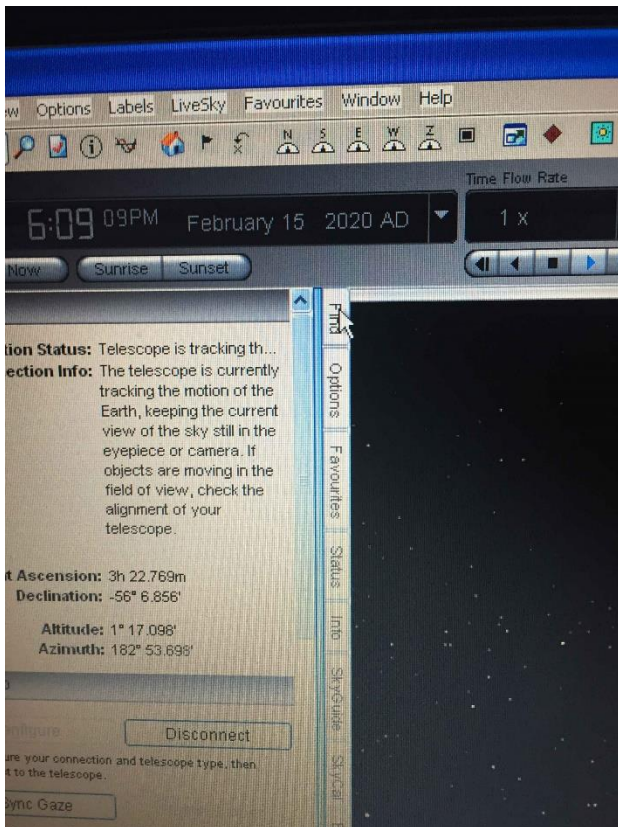


12)

You should see a starry night sky appear! Yay.

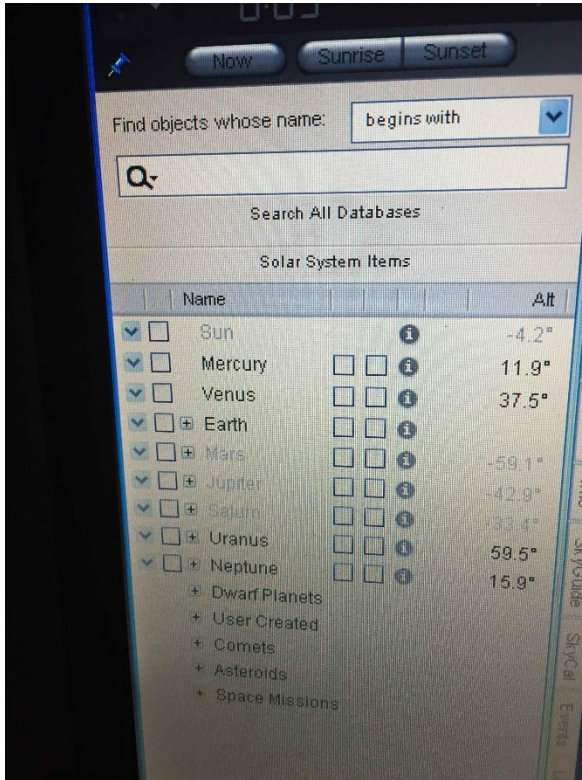
13) Next we have to sync the scope so it can point and slew to objects we are interested in observing.

14) You bring up the “find object” panel by clicking on the “find” tab at the top as shown here:



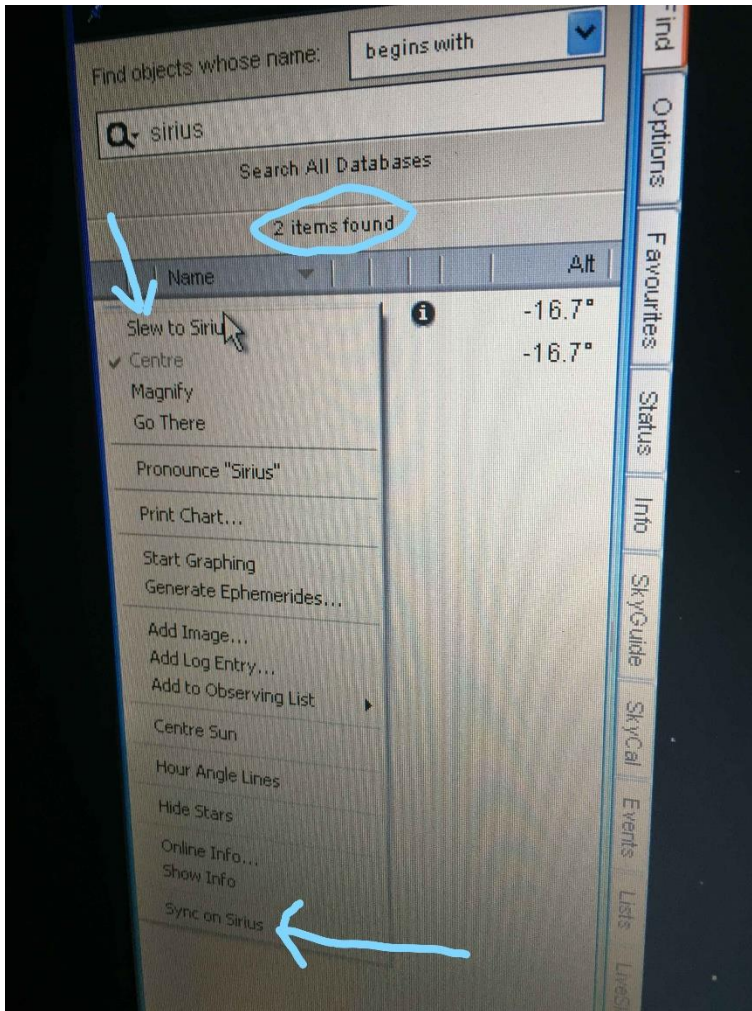
15) Type in the object you are looking for in the search bar at the top (see below) and hit “enter”. The cross hair may move on the screen to the object but the telescope is not going anywhere until you direct it to. Best strategy is to type in a bright star that has appeared at dusk which you can easily see and that would be a good sync target. I would not use a planet because if the telescope is not synced

yet you could get an error message.



16) When you press enter after your target has been typed in it will appear in the object list below the search bar. To either slew OR sync on the object, right click on the object name and a list of options pops up as shown. The slew option is at the top and

the sync option is at the bottom (blue arrows)



Since we are not synced yet, click on the “slew to-“ tab and the scope will then slew most likely close enough to the object to appear in the finder.

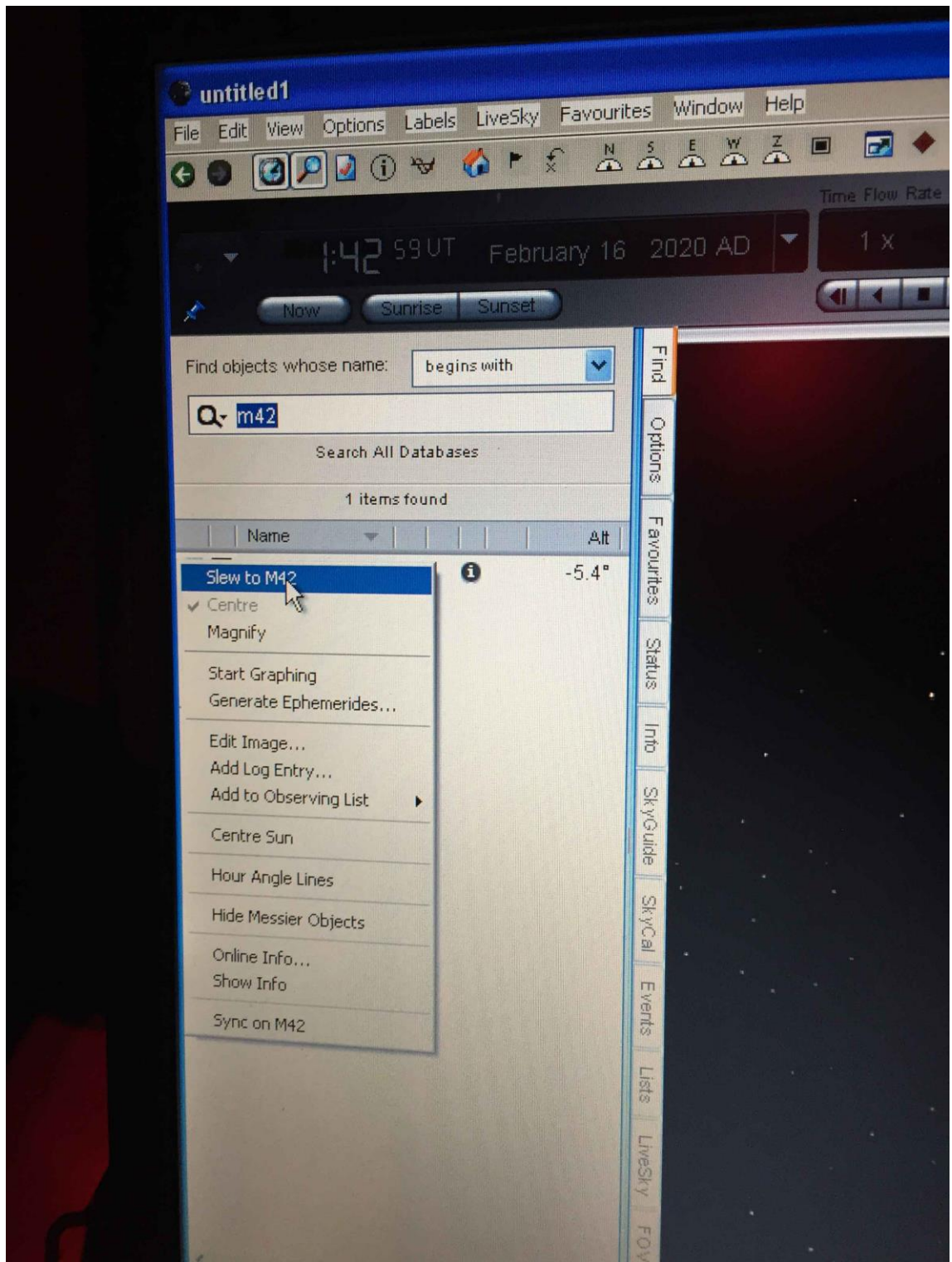
17) Now go back to the scope and on the hand pad as shown earlier there are 4 arrow buttons surrounding the SPD button. Just lightly press the ones that move the scope until the star is centered in the finder first and then in the main eyepiece on

the 16. At first it is easy to overshoot the target. Takes a little practice! Focus with the focus knob on the mirror. Note that it is usually not until at least 1-2 hours into the night that focus becomes stable so you might be “chasing your tail” for awhile. You will have to refocus fairly often in the beginning

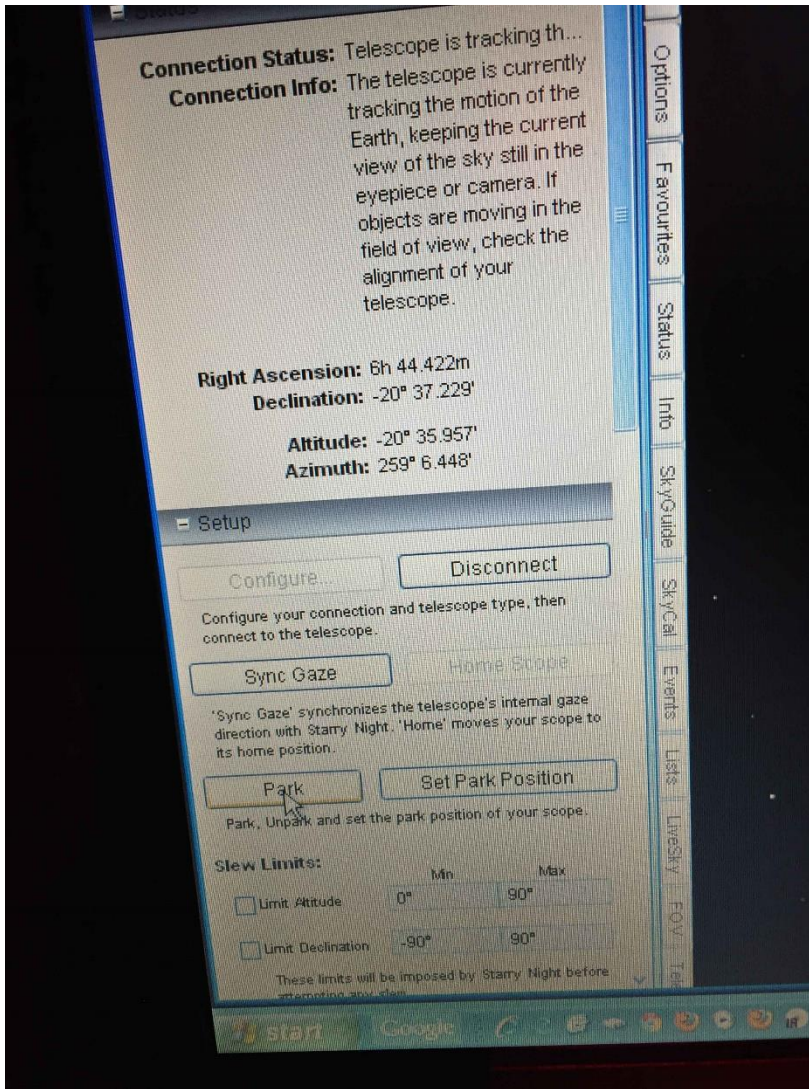
18) Once the star is centered in the eyepiece of the main scope, go back to the laptop, right click on the star name in the object list , go to the bottom of the options tab and click on “sync on...” whatever star you are using. When you do that you will get the Sitech pop up box which looks a little strange with a lot of red square boxes etc but is just confirming the sync so just click in the red square that says “ok” and you’re done.

19) After that all you have to do is enter the object you want to observe, right click on it and slew to it as

in this example of M42

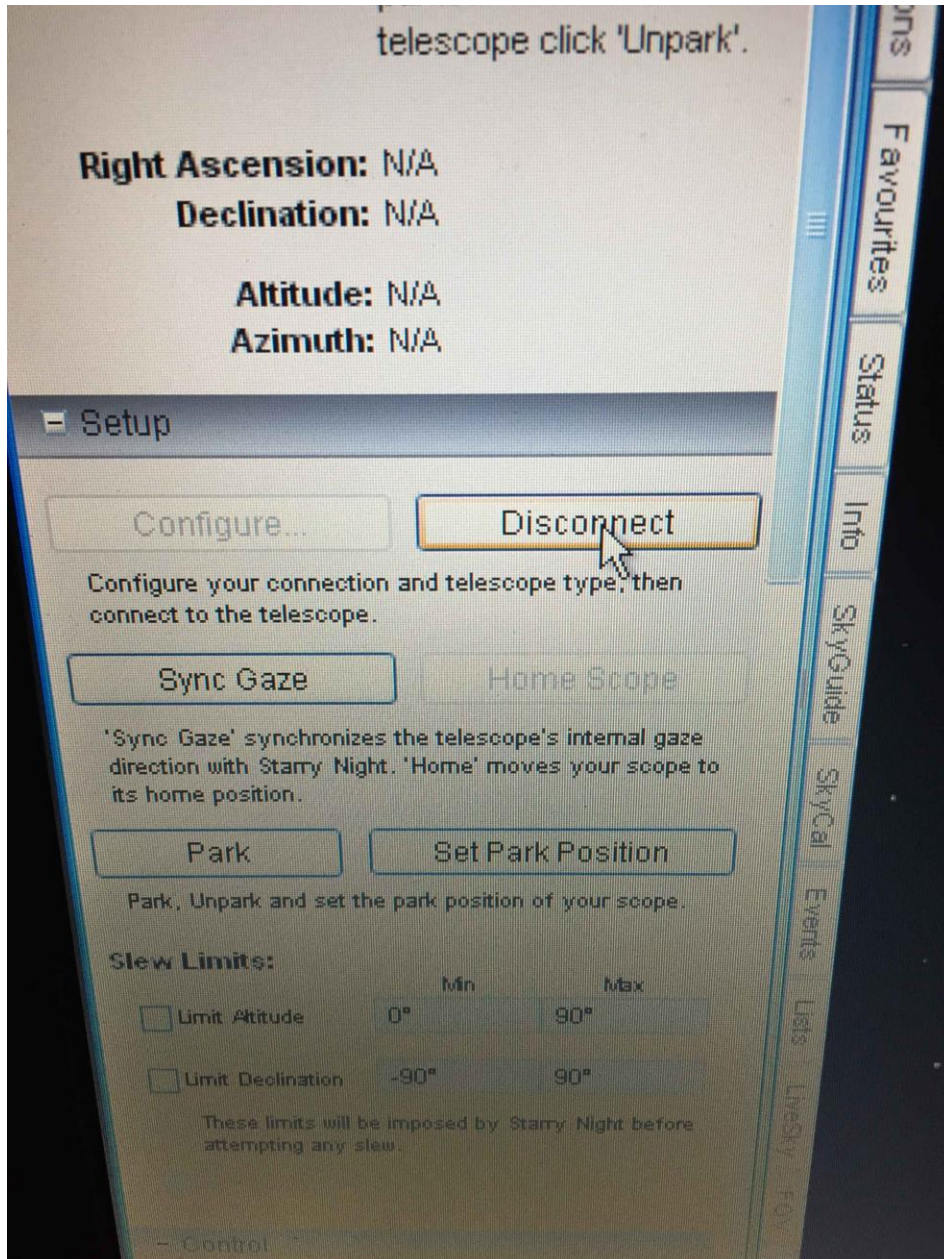


20) Once the session is done you can actually park the scope from Starry Night by first clicking on the telescope tab at the very bottom along the left side panel (remember the tab is barely visible) and then clicking on the “park” button



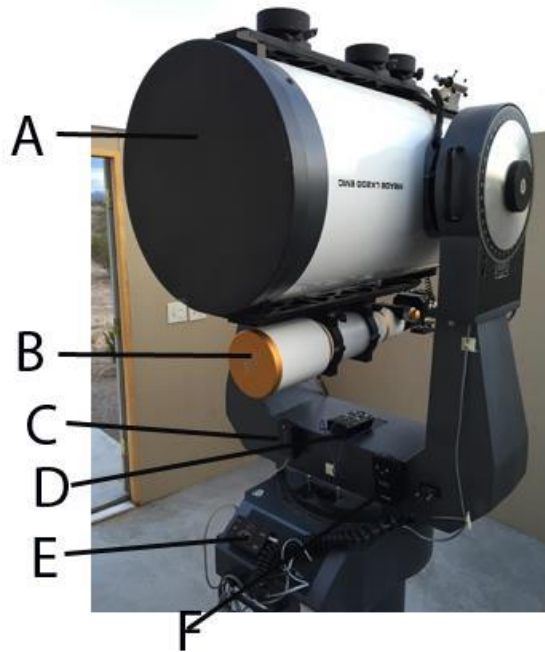
As the scope is parking make sure the cables do not get snagged and if you had plugged in the cord for the fine focuser make sure it is disconnected.

21) Once the scope is in the parked position (position shown at the beginning), disconnect the telescope also in Starry Night by clicking on the “disconnect” button



And you're done!

22) Now close out of both starry night and Sitech and shut the laptop down. Don't forget to turn off the toggle switch on the mount. Make sure the telescope is in the parked position, like this:



Then you can close the roof. Replace the turnbuckles, etc.

Additional points:

You may have to go into the warm room to get a stepladder for some of the visitors. There are also many additional eyepieces in the warm room cabinet if you are adventurous!

Any questions please contact be either email at astrodoc71@gmail.com or cell 508-523-4375

Thanks!

Dave Doctor